



The John of Gaunt School Trowbridge

Sixth Form Prospectus



A Community Academy



Our Vision

Vision Statement:

'Creating an irresistible climate for achievement'

- We challenge, support & encourage every student to achieve their potential
- We believe effort and dedication lead to success and we raise aspirations
- We personalise our provision to meet the needs of individuals
- We enable our students to flourish as confident learners and leaders of our community
- We create a culture where all stakeholders feel valued, supported and proud
- We work collaboratively to improve outcomes for our students and support other schools to improve.

Welcome

Welcome to The John of Gaunt Sixth Form prospectus. We are a thriving comprehensive Sixth Form with a reputation for excellent academic performance. We offer a wide range of subjects, both academic and vocational, providing students with the opportunity to personalise their curriculum to create an exciting and challenging learning experience. Through the support of both highly skilled subject teachers and our excellent pastoral system, students develop into increasingly confident and independent

young adults who follow their aspirations and leave us to pursue courses at universities, apprenticeships or employment.

Our Sixth Form offers a wonderful blend of continued high expectations, greater independence and personalised support.

Our website offers a flavour of what our Sixth Form is like and you are welcome to visit us to find out more. We look forward to working with you.



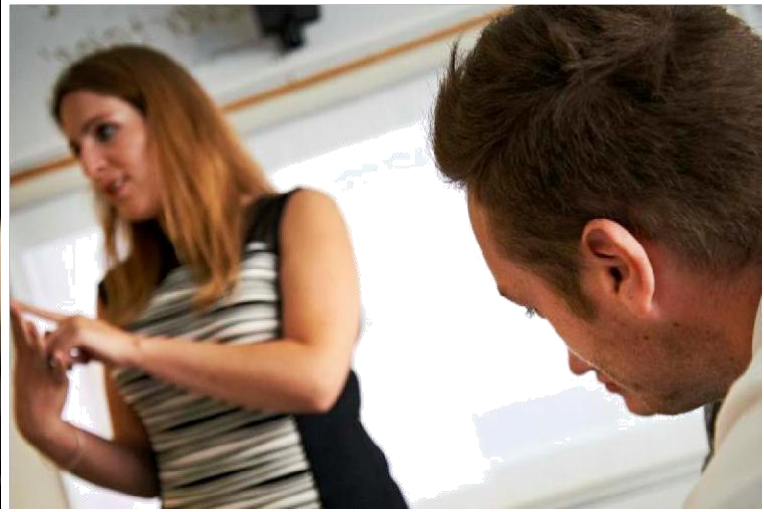


Transition Into Sixth Form

We provide purposeful careers advice for entry into Sixth Form, ensuring that course choices, academic ability and career aims are evenly matched.

There are three pathways of entry into the Sixth Form, depending on the qualifications achieved Key Stage 4. We offer a very broad range of A level and BTEC courses so can cater for a wide combination of subject choices Allowing greater personalisation of the curriculum. Details of the courses we have on offer can be found on our website.

Smaller classes taught by specialist teachers allow for greater individual monitoring and provide students with the opportunity to receive help that is particular to their needs. Progress is continuously assessed and performance is compared to target grades.



Sixth Form Facilities

Students have sole use of 3 study rooms, all of which have computers, WiFi and areas for quiet study. In addition, we have a newly refurbished room in the Post 16 Centre that houses space to work as well as extensive room for relaxing and socialising. Many Faculties also have dedicated Post 16 study areas with subject resources.

There is a small kitchen area for students' use and students take full responsibility for the upkeep of this part of the Post 16 Centre.



Support In Sixth Form

Students are in tutor groups consisting of students from both Years 12 and 13. Sixth Form tutors are very experienced at working with this age group, advising and supporting students through this level of study and university applications or employment opportunities. Tutors are the first port of call for pastoral matters.

The Head of Sixth Form is supported by a Head of Year 12 and Head of Year 13 and the door to the Sixth Form office is always open for students to chat about educational or pastoral matters .



Extra Curricular

All Year 12 students are involved in the school's Employable Skills programme, where one hour per week is dedicated to helping or mentoring others. Examples include: lesson support in school, peer mentoring, helping in primary schools, leading sports activities and assisting in care homes. Students choose an activity that relates to their future career plans or an interest or hobby they have. They tailor their programme. Through the programme students develop skills such as team work, reliability, resilience and independence, all of which enrich them in preparation for life after school. We have many sports clubs, drama and musical groups that students can join. The school also runs the Duke of Edinburgh scheme and Ten Tors challenge.

We are committed to the development of our students' skills, both academic and personal.

The Next Step

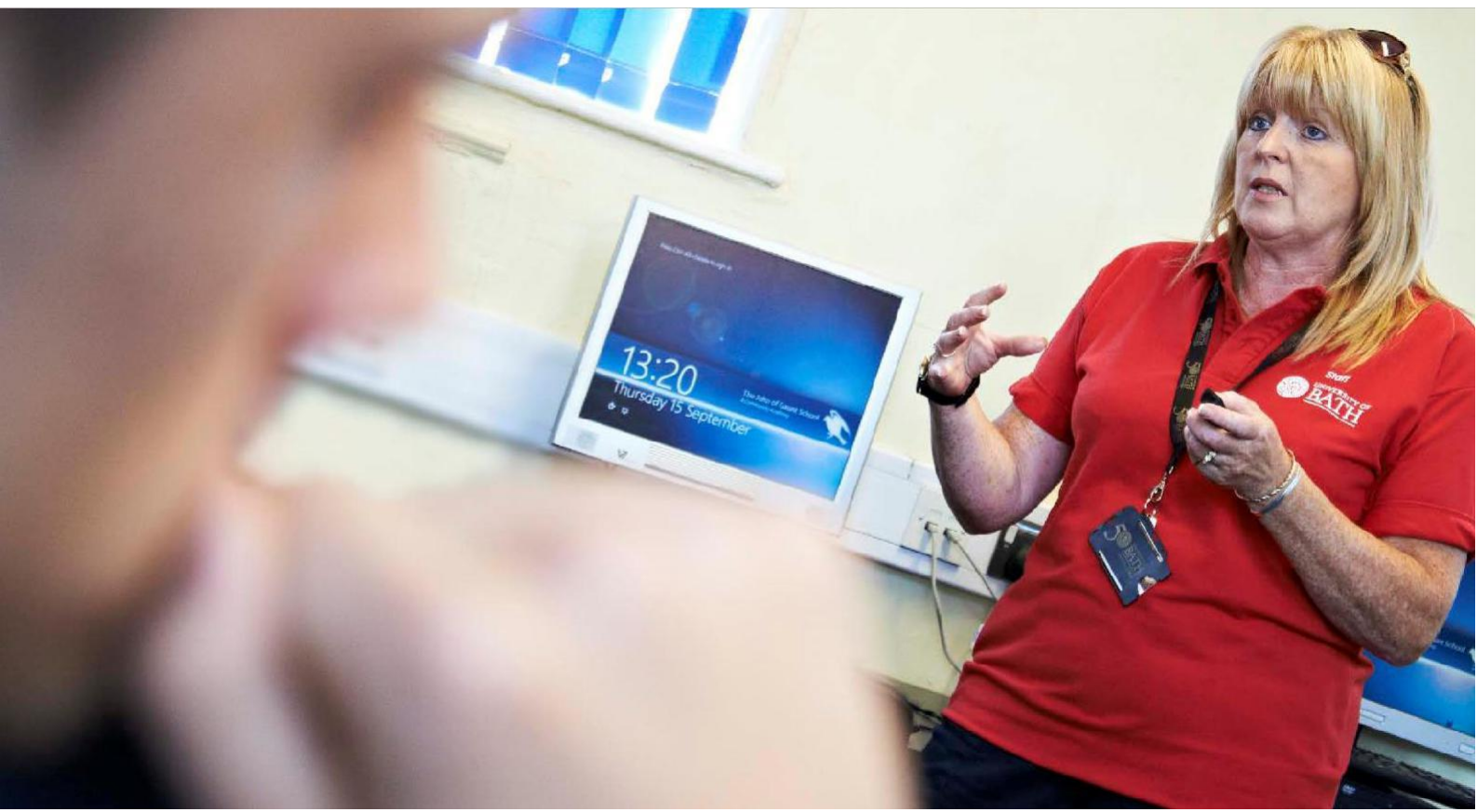
Every year we run a varied and full Personalised Extended Curriculum, hosting many outside speakers who complement the work of our own experienced staff. These sessions provide students with guidance and advice on many topical issues including careers, finances and health topics.

We provide detailed support for completing UCAS forms for application to university and CVs for employment. We work with a wide range of local universities who will talk to our students about preparing for the application process and university life. On average 80% of every Year 13 head off to university and other higher education establishments. Our students study at a wide-range of universities.

Careers information is available through our school careers advisor. Advice can be accessed through either an individual

careers appointment or through a lunch time drop-in careers clinic. We have good links with local employers who have supported our students with invaluable advice and have even provided employment opportunities. In Year 12 all students complete work experience which is organised by the student in order that it can be tailored to match future aspirations.

Personalised support is given to help all students meet their aspirations and goals whether they be in higher education or employment.





The John of Gaunt School Trowbridge



The John of Gaunt School
A Community Academy

Wingfield Road, Trowbridge, Wiltshire, BA14 9EH

Telephone: 01225 762637
Fax: 01225 777475

email: sixthform@jogschool.org
website: www.johnofgauntschool.org