



The John of Gaunt School  
A Community Academy



EQUA Mead  
Learning Trust  
Every Child, Every Chance

# CAREERS FAIR GUIDE



**Guide To Exhibitors**

**5th February 2026**

# CAREERS FAIR 2026

Young people have a great deal to think about as they consider their options when leaving school or college, and it's hard to keep up to date with all the opportunities available. For younger students, it is about learning what kind of jobs are there?

The purpose of this Careers Fair and this brochure, is to introduce our young people to the wide range of local employers that provide job opportunities to school or college leavers. Some of these companies are national and international and with that come a wider range of opportunities to suit many kinds of career journeys. Many of these companies offer apprenticeships from level 2 - level 6 and are appropriate for our students and the wider community.

Browse through the pages to discover more about the businesses and you may be surprised to see so many great employment opportunities available in Trowbridge and Wiltshire.

# BRINGING YOU THE BEST DAIRY PRODUCTS

Nine out of 10 litres of our milk comes from our Arla farmer owners. Our milk is then carefully handled by dedicated teams at Arla, who are passionate about bringing the natural goodness of milk to you and your family. Whichever Arla dairy product is your favourite, you can be sure that it comes from a farmer-owned dairy company.



*A dairy cooperative*

**WE ARE  
FARMER OWNED**





With the aim of producing “Multi-Skilled” Engineers, you will study the following modules:

- Dairy Technology & Processing
- First Line Maintenance
- Maintenance Best Practice
- Producing Replacement Components
- Materials Science
- Mechanical Maintenance
- Stainless Steel Fabrication
- Fluid Power Systems
- Electrical Maintenance
- 18th Edition Institute of Electrical Engineers Regulations
- Control Systems
- Instrumentation
- Servos and Variable Speed Drives
- Services & Utilities
- Fluid & Thermodynamics
- Engineering Mathematics



Eden Engineering is a ground breaking apprenticeship providing an Advanced Apprenticeship for maintenance technicians and engineers, with the aim of producing world class staff for tomorrow's dairy industry. The complexity of automation in our dairies has increased and there are challenges to be met to maintain the skills required to ensure equipment works at optimum levels.

The Apprenticeship programme is delivered by Kirklees College. Kirklees College is a leading provider in this field and will lead on the delivery of the course throughout the 4 years.

We support you to become a qualified Engineer with a mix of practical and classroom- based learning. At the end of the 4 years, you will graduate with an OAL L3 in Food and Drink Engineering Maintenance (Multiskilled), Level 3 Health and Safety Award, and your 18th Edition Regulations Certificate.



**Whether you're joining one of our graduate programmes, exploring student positions or taking your first steps in your career**



What do you get from an apprenticeship?

An Army apprenticeship gives you more than just qualifications. It's a chance to learn, earn, and grow—all while doing the job.

- Gain recognised qualifications while working.
- Get paid a full soldier's salary—not just apprentice wages.
- Learn practical skills that matter inside and outside the Army.
- Ideal if classroom learning isn't your thing.



The Army has a diverse range of apprenticeships. The type of apprenticeship you complete will depend on your role in the Army, and with over 39 different apprenticeships available here are just some of the ones you could be doing:

#### ENGINEERING

- Engineering Technician
- Fabrication & Welding
- Aircraft Maintenance

#### INTELLIGENCE & COMMS

- Intelligence Analyst
- Network Cable Installer
- Network Engineer
- Data Analyst

#### HR

- Business Administrator

#### PROTECTIVE SERVICES

- Non-Home Office Police Officer

#### LOGISTICS & SUPPLY

- Production Chef
- Large Goods Vehicle (LGV) Driver C + E
- Port Operative
- Aviation Customer Services Operative
- Ordnance, Munitions and Explosives Technician
- Supply Chain Warehouse Operative

#### MEDICAL

- Senior Healthcare Support Worker
- Animal Care & Welfare Assistant

#### COMBAT

- HM Forces Service Person (Protective Services)
- Equine Groom
- Aviation Ground Handler

# Apprenticeships at Bath College

FOR FINDING CAREERS

NOT COURSES



300 Courses Available

2,500 Online Learners

10,000 Full and Part-Time Learners

*We provide innovative training to develop skills, inspire individuals, enrich the wider community and encourage all to achieve and progress.*



**REAL SKILLS.  
REAL FUTURES.**



Choose from a wide range of options  
At Bath College, we plan our courses to  
meet the needs of our communities.  
Whether that's leaving school or a  
complete career change, we can help  
you continue your journey.

PROSPECTUS 2026-2027





BATH SPA  
UNIVERSITY

"At Bath Spa you have the opportunity to study something you love, with amazing facilities on a beautiful campus."

## Explore Bath

Our Newton Park Campus is nestled in the countryside just four miles from Bath city centre, and Locksbrook Campus enjoys a riverside location in the old industrial area of Bath.

Bath is a world-famous, beautiful city that is the ideal combination of the old and the new. Small, but perfectly formed, the city is a UNESCO World Heritage site which boasts world-famous architecture, a wealth of independent shops, cafés, clubs and bars, and a vibrant music, arts, and theatre scene. It's hard not to fall in love with it.





I love working for Beard. Whether it's with internal colleagues or external partners, everyone works together towards the same goals, in a friendly and open environment, and looking out for each other. It's great to work for an ethical company, supported by good leadership.



## BUILT WITH ETHICS

A family business since 1892, we keep people at the heart of our work. Putting people first means realising our potential to do good. From regeneration, to employment and skills creation.

## ROLES IN THE INDUSTRY





Set on the banks of the River Avon, Bristol is a beautiful, passionate and artistic city filled with young creatives. It's colourful, bright and one of the UK's fastest-growing creative cities. A long-term home to the BBC with a Channel 4 hub, it's also the home of Banksy, Massive Attack and Aardman Animations.

Our campus, newly refurbished in 2021, is based in the heart of the city on Broadmead in a space that used to house the historic Bierkeller (the site of Nirvana's first UK gig amongst other incredible artists) and has been designed to promote collaboration and creativity. We've kitted our space out with the best professional equipment and specialist spaces like photo studios, green screen rooms, performance spaces and production pods, so you'll be ready for an industry with an understanding of the tools and skills needed to really flourish.

A photograph of a woman with long blonde hair singing into a microphone. The image is partially obscured by large purple text and white text at the bottom.

# Home of the Sound Obsessed

Professional degrees and industry training in music and sound. Est. 1998



## OUR AIM

Our aim is to provide award winning service whilst consistently sourcing outstanding deals, exclusives, and extra touches for you, as our customers.

We book a wide range of trips across the Globe, including across each continent. Check out our offers page for inspiration [Offers - Travel By Hannah](#)

Our [team](#) has excellent industry wide connections, always staying up to date and experience pride in creating the dream holiday for you.

We are a member of ABTA and your trips are ABTA, ATOL & Package Travel Regulations (if applicable) protected which enables you to book with complete peace of mind.



## YOUR ADVENTURE STARTS HERE...

Hannah Porter created, owns & runs Travel By Hannah, an independent travel agency with her team and their shop on Marlborough High Street, Wiltshire.

Hannah, Billy, Lily & Amber know when it comes to travel know when it comes to travel everyone's desires are different, travel is our passion, and we design your getaways around you.

At Travel By Hannah we focus on putting clients first, our personal service has lead us to have a high number of loyal customers from all over the UK and 5\* reviews on [Google](#), [Facebook](#) & [Trustpilot](#).



AWARDED  
NO.1 TRAVEL  
AGENCY UK &  
IRELAND  
2024



A photograph of the IAAPS building at the University of Bath. The building is a modern structure with a dark facade and a prominent entrance. The sky is overcast. The IAAPS logo and the University of Bath crest are visible on the building's exterior.

# Advancing Propulsion

# IAAPS

# UNIVERSITY OF BATH

# A world-leading centre of excellence

IAAPS is a world-leading centre of excellence supporting the transport industry in the transition to net zero.

Established to foster engineering innovation through the collaboration of industry, enterprise and academia, IAAPS is a wholly owned commercial subsidiary of the University of Bath.

We combine cross-sector academic rigour with commercial focus to support industry in the development and adoption of clean, efficient and affordable zero carbon propulsion technologies for integration into commercial applications. Our expertise is based on over 40 years of propulsion systems research at the University of Bath and enables a broader experimental approach than conventional test facilities.



## About us

Marshall Drilling are an independently owned, drill only contractor specialising in geotechnical and geo-environmental rotary drilling.

## Site investigation & drilling services:

Dynamic sampling in sizes from 76mm – 116mm samples.

Conventional rotary coring in T2-101, T6-116 and T6-146.

Geobore-S wireline, providing an undisturbed class 1 core sample in 102mm diameter.

SPT & UT100 insitu sampling.

Robit / Odex overburden casing systems

Flushing mediums including water / mud, air & air-mist flush.

Open hole drilling using range of down the hole hammers (DTHH), tri-cone rock rollers, PDC and drag bits.

Hollow Stem Augering for progression through granular material.

Concrete coring of hard standing and structures.

Numerous casing sizes allowing multiple environmental seals in boreholes.

# Novuna<sup>®</sup> Vehicle Solutions

Novuna Vehicle Solutions

**Pioneering innovation,  
driving the future  
of fleets**

Your trusted fleet partner for today and tomorrow

From cars and vans to trucks, plant, and specialist equipment, our sector specific experts will help you reduce costs, carbon, and operational risk.

With over 40 years experience managing some of the biggest and most diverse fleets in the country, we have the knowledge, skills, and resource to help you maximise the value of your entire fleet, no matter what vehicles you run. We're proud to be named Fleet News Leasing Company of the Year 2025, a true testament to our unwavering dedication to delivering industry-leading decarbonisation solutions for businesses and drivers alike.

Why choose Novuna?

Getting the support you and your drivers need, when and where it's needed requires more than just fleet management expertise, robust processes, and a nationwide network of support services. It needs people who understand the challenges you face, think like you do, and are fully empowered to deliver service excellence every day.

With in-house expertise in electric fleet solutions, hydrogen fleets, and alternative fuels, combined with an unparalleled ability to design, fund, build, and manage any type of vehicle, anywhere in the UK, we're delivering business fleet solutions that are right for today and ready for tomorrow.

## Wiltshire Council Reablement Service (Trowbridge Hub)

The West Wiltshire reablement team is based at County Hall and works across the West locality in Melksham, Bradford on Avon, Trowbridge, Devizes, Warminster, Westbury and surrounding villages. Reablement is a short-term service in your home from specially trained social care staff, including occupational therapists and reablement workers who work with you to enable you to do things yourself and re-learn skills you may have lost. The service is available to adults who normally live independently at home, but who might have lost physical ability or confidence in carrying out their day-to-day living tasks. Reablement is a foundation to make sure people achieve what's important to them to live independently. The reablement teams help people identify their strengths and assets, so they can live well in their communities.

Working with partner organisations, reablement helps people before they reach crisis point, to stay healthy and out of hospital or reliant on care services. We focus on identifying existing individual, family and community support, ensuring that people can live independently for as long as possible.

Rather than assuming responsibility for providing care we look for more local, more sustainable and less intrusive solutions wherever they are available. We help people to access the wide range of opportunities for intervention and prevention provided in communities and by partner organisations. Reablement is a short and intensive service. Before the end of the agreed period, staff will carry out assessments to see if you are likely to make further progress. However, if it is agreed that you require long-term support, we will work with our colleagues in adult care to arrange this for you.

# Welcome To Snap Fitness Trowbridge Gym



## Welcome To Our Trowbridge Gym

Get 24/7 gym access to the best range of cardio, strength, functional training equipment, group fitness classes and qualified personal trainers - all in a supportive community to help you move your body and your mood.

### Trowbridge Gym Amenities



24 Hour  
Access



Cardio  
Equipment



Strength  
Training



Free Weights



Group Classes



Personal  
Training



Fitness on  
Demand



Snap App



HDTV



Private  
Showers



Myzone



# FIND YOUR ROLE

To join as an Officer, you need to hold A-level equivalent qualifications or a university degree, depending on the role. As an Officer, you'll need leadership and management skills in addition to technical skills, as you will be responsible for the welfare and discipline of men and women under your command.

Enlisted Aviators make up the majority of RAF personnel, bringing their specialist skills to provide vital ground support roles. The RAF will train you and support the development of your expertise crucial to our mission and also applicable in the civil world. You do not need specific qualifications to join as an aviator, we will provide all the training and certification.



ROYAL NAVY

# MADE IN THE ROYAL NAVY

## Discover your potential

Travel the world. Make friends for life. Develop skills you never knew you had. And go places you never imagined. Could you be made in the Royal Navy?



### Warfare

Get into the thick of the action. Identify targets and threats, and analyse, plan and execute essential global operations.



### Healthcare and Medical

Combine medicine and adventure by providing expert care in NHS hospitals, on ships at sea and in war zones.



### Logistics and Catering

The backbone of the Royal Navy, ensuring the delivery of essential food, supplies, HR and hospitality.



### Engineering

Work with some of the most state-of-art technology on the planet and ensure it's ready and reliable in any situation



### Royal Marines

Join the world's top amphibious force and wear the coveted green beret.

# £5k for earning your 'Dolphins'

If you're interested in high-salary roles with extra pay for time at sea, then a career in the Submarine Service could be for you.

## Other ways to join

If you'd prefer a non-military or part-time role, there are plenty of options available in either the RFA or the Reserves.

# T H WHITE GROUP

**AGRICULTURE CONSTRUCTION COUNTRY STORES DAIRY GROUND CARE**  
**PALFINGER UK PROJECTS ENERGY, FIRE & SECURITY MACHINERY IMPORTS**



## Getting the best from machinery, land and buildings since 1832.

**PALFINGER** UK

At T H WHITE we get the best from innovation using ingenuity and know-how to support livelihoods for generations.

We work alongside our customers to support and enhance their businesses. We engineer equipment solutions, provide after-sales support and help modernise business practices.

This is how we deliver the highest quality and great value to all our customers and have been since 1832.

We are hands on today; with our eyes on tomorrow.



## AGRICULTURE

We offer comprehensive sales, servicing & breakdown cover for new & used agricultural equipment and implements; we'll help you find the right machine for the job & keep it running smoothly.



## PROJECTS

With generations of experience we have built a reputation as market leaders in designing, engineering and building grain storage and handling facilities.



## GROUND CARE

As a one-stop shop for market-leading professional groundcare equipment we provide a vast selection of products along with expert sales, service and breakdown support.



## DAIRY

Our fully-trained team project manage, install and maintain a wide range of equipment. Whether conventional or robotic, we'll help you keep your business running, 24 hours a day.



## COUNTRY STORE

We're proud to stock a wide range of quality brands. From traditional country items to innovative, new technologies that will help you get more from your work and leisure.



## CONSTRUCTION

With a track record in providing construction sector equipment, servicing and support, we deliver expert advice to your business and aim to exceed your expectations.



# THE OLD TOWN HALL

TROWBRIDGE

**YOUR TOWN HALL  
COMMUNITY OWNED  
COMMUNITY LED**

**Trowbridge Town Hall Trust is an independent charity and not part of either Wiltshire Council or Trowbridge Town Council.**

**Trowbridge Town Hall has been at the centre of life in our town for over a century.**

**In August 2023, our building closed for an extensive two year refurbishment and remodelling as part of the Future High Streets Fund £16 million investment in Trowbridge, enabling us to provide a greater capacity to hold events as well as a diverse programme of cultural and social activities.**

**Keep an eye on our social media for regular refurbishment updates.**



# Wessex Water

YTL GROUP



If you are interested in working in one or more of the following industries we want to hear from you:

- utilities
- engineering and construction
- property and development
- renewable energy
- entertainment and hospitality
- customer services
- finance, IT, legal, estates, administration, etc.

## About us

We are a group of companies with ambitious plans for the future - and if you share our ambition we want you to be part of it!



## Who is YTL UK?

YTL UK needs exceptional people to join us as we deliver bold initiatives across many sectors from the water industry to construction and engineering to entertainment and hotels.

Based in the south west of England, our reach extends beyond the UK as we are part of a global company that is powering ahead with building and delivering services that make a big difference to peoples' lives and the environment.

Our parent company YTL Power provides electricity, clean water, wastewater systems and the latest communication services to communities in various countries including Malaysia, Singapore, Indonesia, Jordan, the Netherlands and the United Kingdom.

YTL Power has many exciting and innovative projects in the pipeline including the construction of a huge solar farm and green data centre in Malaysia to serve customers in Singapore ensuring the country has the access it needs in the digital age.

### **Reassuringly Approved**

We are a government-approved training provider for the delivery of Apprenticeship Standards in Accounting at Level 3 and Level 4 and an approved training centre for the Association of Accounting Technicians (AAT). We are also a partner in learning with ICAEW.

### **AAT Level 3 Assistant Accountant Apprenticeship**

The AAT Level 3 Advanced Diploma in Accounting helps you to master complex financial processes, preparing you for a career in finance. The Assistant Accountant Apprenticeship adds training in the business skills and behaviours necessary to help you succeed in a junior role in accountancy and provides the foundation for further progress.



### **All Your Accountancy CPD And Training Needs Made Easy**

Stress-free training solutions to keep your business compliant and support the development of your accountancy team as you grow.

# UNIVERSITY CENTRE

You don't need to move away to university to get a good degree. At WCUC, we offer local Higher Education with excellent teaching from industry specialists.

All of our Higher Education courses are taught in smaller groups, in supported learning environments and using friendly and collaborative working practices.

We offer university-level courses in the following areas:

- Animal Management
- Business, Finance and Management
- Computing and IT
- Crime and Criminal Justice
- Early Years Education and Childcare
- Engineering
- Film Production and Cinematography
- Healthcare
- Motorsport Engineering
- Sport



# O I E S

## QUALIFICATIONS FRAMEWORK

### Higher National Certificate

A Higher National Certificate (HNC) is a highly practical qualification, normally studied over one year full-time or two years part-time, and can be used as entry to the second year of a degree course – or, more commonly, topped up to a Higher National Diploma with a further year of study.

### Higher National Diploma

A Higher National Diploma (HND) is usually studied over two years full-time or three years part-time, and like Foundation Degrees, can be converted to a full degree by topping up with a final year.

### Higher Technical Qualifications

Higher Technical Qualifications (HTQs) are technical qualifications that have been developed by employers and awarding bodies, so you will get the right training, knowledge and skills to succeed in the workplace. They are usually studied over one or two years full-time, with part-time options available, and can be converted to a full degree by topping up with a final year.

### Foundation Degree

A Foundation Degree (Fd) qualification is equivalent to the first two years of a degree course. Usually designed with input from employers, these courses ensure that, on completion, students can make an immediate contribution to their workplace. Students often then choose to top up their qualifications by either joining the third year of a degree or a specially designed 'top-up' qualification.

### Top-up Year or 'Integrated Degree'

A top-up year is normally one year of study at Level 6, which is the final year of a full degree programme and follows either a Foundation Degree or an HND in the same or a similar subject.

### Degrees

A full degree is a three-year programme which includes research projects in the final year. The course will lead to a Bachelor's Degree. Students may also have the option to undertake a placement year.

### Higher/Degree Apprenticeships

These are a great alternative to university, with many now offering training to degree and postgraduate degree level. You will receive training both on and off the job, a salary and the opportunity to move your career forward – all without tuition fees.

Level 7

Postgraduate/Professional Development

Level 6

Bachelor's Degree

Degree  
Apprenticeship

Level 5

HND

HTQ at  
Levels 4-5

Foundation  
Degree

Higher  
Apprenticeship

Level 4

HNC

Level 3

Access to HE/  
Foundation Year

NVQ/VRQ  
Level 3

A Levels

BTEC Level 3  
Extended Diploma

T Levels

Advanced  
Apprenticeship





**OUR SUBJECT AREAS**

**We offer university courses across a broad range of subjects and levels. We run programmes which award Foundation Degrees, Bachelor's Degrees, Higher National Diplomas, Higher Technical Qualifications, and Higher Apprenticeships.**

**We offer university-level courses in the following areas:**

- Animal Conservation and Countryside Management
- Computing Cyber Security
- Crime and Criminal Justice
- Early Years Education and Childcare
- Engineering
- Film Production and Cinematography
- Healthcare and Nursing
- Motorsport Engineering
- Sport and Exercise Science
- Sustainable Business Management



**WANT TO KNOW MORE?**

A full list of courses is available on our website, where you can find more detailed information about each one. Visit [wiltshire.ac.uk/university-level](http://wiltshire.ac.uk/university-level)



### Police constable

Discover more about becoming a Police Constable



### Police staff



### Contact centre operators



### ICT careers



### Police community support officers (PCSOs)



### Special constables and police support volunteers



### Detective Constables

Discover more about becoming a Detective Constable

## Careers

Check out the opportunities from Police Officer to PCSO, Contact Centre Operator to ICT specialists and a wide variety of Police Staff roles

# Welcome to MPCT Salisbury



IN COOPERATION WITH



IN ASSOCIATION WITH



Preparing life for  
what you'll throw  
at it.

Take the next step to a career in  
the Armed Forces



## MPCT<sup>™</sup>

The making of you

At the **Military Academy**, we believe that through outstanding leadership and teaching, all can achieve their goals.

The Military Academy is a unique training college that helps 16+ year olds develop their fitness, vocational qualifications, and employability skills to help prepare for employment, including rewarding careers in the British Armed Forces.

[READ MORE](#)

[FIND OUT IF YOU ARE ENTITLED TO RECEIVE FINANCIAL SUPPORT WHILE AT MPCT](#)

## RENELEC GROUP

### SPECIALISED SERVICES TO THE CONSTRUCTION INDUSTRY

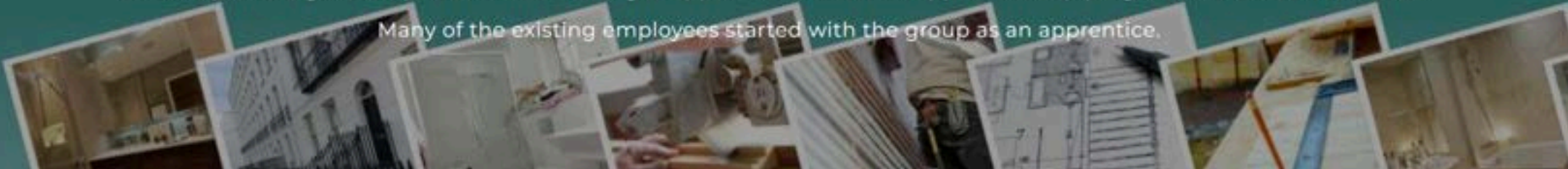
The Renelec Group based in Devizes, Wiltshire with a second office in Chalgrove, Oxfordshire provide specialised services to the Construction Industry.

These services include Electrical, Plumbing & Heating, Mechanical, Groundworks and more recently Construction.

The group operate in a geographical area covering The Midlands, The South and The South-West of England using a mixture of employed operatives, labour only subcontractors and specialist subcontractors.

Renelec places a great emphasis on the training of apprentices, and have apprenticeship programmes across all services.

Many of the existing employees started with the group as an apprentice.



**Renelec**  
BUILDING SERVICES

Electrical contracting to both Domestic  
and Commercial markets

**Renelec**  
LIMITED

Accounts and admin function for the  
Group

**Renelec**  
GROUNDWORKS

Groundworks contracting

**Renelec**  
CHALGROVE

Plumbing and heating contracting

# Apprenticeships

Earn a wage whilst you learn on the job

## Myth busting

Apprenticeships are a fantastic way to start your career and gain hands-on experience while earning a wage, but they can sometimes get a bad reputation.

In this post, we dispel some of the most common myths around apprenticeships and show why they're a great option for people of all ages and backgrounds.

## Earn a wage whilst you learn on the job

Apprenticeships are a great way to earn a wage whilst you learn on the job. As an apprentice, you will work alongside experienced staff members, acquiring job specific skills and gain nationally recognised qualifications.

Selwood Housing has been a great place to learn because the culture is geared towards personal development and I'm supported to gain experience that will help me in my current role and beyond.

What I enjoy most about my apprenticeship is learning on the job while studying. It has helped me understand HR's role in the organisation, and I get to work on various projects at Selwood Housing.

The thing I most enjoy about being an apprentice is the people you get to meet. At Selwood Housing, I move around different departments, meeting new and lovely people, and learning new techniques from each one of them.

# CONTINUE YOUR JOURNEY, WITH BATH COLLEGE

## Your future in your hands

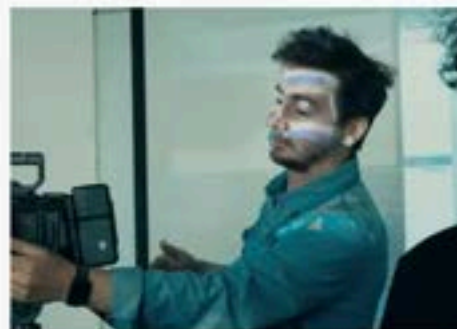
Whether you're thinking of leaving school, getting a job, continuing education, or returning after a break, we can help you find your future.



School Leavers



Apprenticeships



T-Levels



Foundation Learning



Adults 19+



English Language  
School



English & Maths



Higher Education

Level	Qualification / educational route				
8	Doctorate (PhD)		NVQ 8		
7	Masters degree (MA)		Degree apprenticeship / NVQ 5, 6, 7		
6	Bachelors degree BA or BSc				
5	Foundation degree FdA or FdSc	Higher National Diploma (HND)			
4		Higher National Certificate (HNC)	Higher apprenticeship / NVQ 4		
3	A levels Grades A-E	International Baccalaureate	T Levels	BTEC diploma BTEC certificate	Advanced apprenticeship / NVQ 3
2	GCSE Grades 4-9 (C, B, A or A*)			BTEC first diploma	Intermediate apprenticeship / NVQ 2
1	GCSE Grades 1-3 (D,E,F or G)			Foundation diploma / entry level qualifications	Traineeship / NVQ 1
	Academic route		Vocational route	Applied / work route	



# Amazing Apprenticeships



Amazing Apprenticeships is a leading organisation in the education sector.

For over a decade we have been working to tackle misconceptions about apprenticeships and technical education, promote their benefits, and push the

## EXPLORE THE OPTIONS

